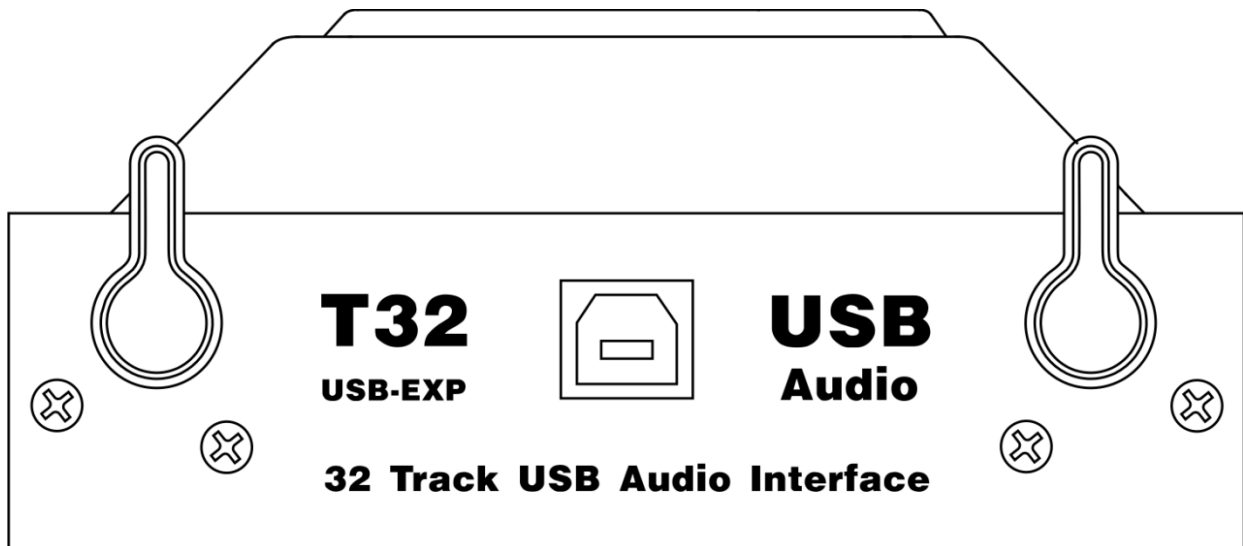




MANUAL



ENGLISH

USB Multitrack Module V1

Ordercode: D2298

Table of contents

Warning2
 Safety Instructions2
 Operating Determinations3
 Return Procedure3
 Claims3

Description of the device4
 Channel names4
 Overview4

Installation5

Set Up and Operation7
 Software Installation7
 Setting Sample Rate10

Product Specification10

Warning



**For your own safety, please read this user manual carefully
before your initial start-up!**



Unpacking Instructions

Immediately upon receiving this product, carefully unpack the carton and check the contents to ensure that all parts are present, and have been received in good condition. Notify the dealer immediately and retain packing material for inspection if any parts appear damaged from shipping or the carton itself shows signs of mishandling. Save the carton and all packing materials. In the event that a fixture must be returned to the factory, it is important that the fixture be returned in the original factory box and packing.

Your shipment includes:

- USB Multitrack Module
- User manual



CAUTION!
Keep this device away from rain and moisture!
Unplug mains lead before opening the housing!



Safety Instructions

Every person involved with the installation, operation and maintenance of this system has to:

- be qualified
- follow the instructions of this manual



CAUTION! Be careful with your operations.
**With a dangerous voltage you can suffer
a dangerous electric shock when touching the wires!**



Before you initial start-up, please make sure that there is no damage caused by transportation. Should there be any, consult your dealer and do not use the system.

To maintain perfect condition and to ensure a safe operation, it is absolutely necessary for the user to follow the safety instructions and warning notes written in this manual.

Please consider that damages caused by manual modifications to the system are not subject to warranty.

This system contains no user-serviceable parts. Refer servicing to qualified technicians only.

IMPORTANT:

The manufacturer will not accept liability for any resulting damages caused by the non-observance of this manual or any unauthorized modification to the system.

- Never remove warning or informative labels from the unit.
- Never leave any cables lying around.
- Do not modify the device.
- Only use system indoors, avoid contact with water or other liquids.
- Avoid flames and do not put close to flammable liquids or gases.

- If system is dropped or struck, disconnect the power supply immediately. Have a qualified engineer inspect for safety before operating.
- If the system has been exposed to drastic temperature fluctuation (e.g. after transportation), do not switch it on immediately. The arising condensation water might damage your system. Leave the system switched off until it has reached room temperature.
- If your Dap Audio device fails to work properly, discontinue use immediately. Pack the unit securely (preferably in the original packing material), and return it to your Dap Audio dealer for service.
- Repairs, servicing and electric connection must be carried out by a qualified technician.
- Keep this manual for future reference.
- Clean only with dry cloth.
- This device should only be serviced by qualified personnel. If not warranty might be void.
- Please check the units condition after unpacking. If the outside of the carton box has been damaged, inform your shipper immediately.

Operating Determinations

If this system is operated in any other way, than the one described in this manual, the product may suffer damages and the warranty becomes void.

Any other operation may lead to dangers like short-circuit, burns, electric shock, etc.

You endanger your own safety and the safety of others!

Improper installation can cause serious injuries and damage of property !



Return Procedure



Returned merchandise must be sent prepaid and in the original packing, call tags will not be issued. Package must be clearly labeled with a Return Authorization Number (RMA number). Products returned without an RMA number will be refused. Highlite will not accept the returned goods or any responsibility. Call Highlite 0031-455667723 or mail aftersales@highlite.nl and request an RMA prior to shipping the fixture. Be prepared to provide the model number, serial number and a brief description of the cause for the return. Be sure to properly pack fixture, any shipping damage resulting from inadequate packaging is the customer's responsibility. Highlite reserves the right to use its own discretion to repair or replace product(s). As a suggestion, proper UPS packing or double-boxing is always a safe method to use.

Note: If you are given an RMA number, please include the following information on a piece of paper inside the box:

- 01) Your name
- 02) Your address
- 03) Your phone number
- 04) A brief description of the symptoms

Claims

The client has the obligation to check the delivered goods immediately upon delivery for any shortcomings and/or visible defects, or perform this check after our announcement that the goods are at their disposal. Damage incurred in shipping is the responsibility of the shipper; therefore the damage must be reported to the carrier upon receipt of merchandise.

It is the customer's responsibility to notify and submit claims with the shipper in the event that a fixture is damaged due to shipping. Transportation damage has to be reported to us within one day after receipt of the delivery.

Any return shipment has to be made post-paid at all times. Return shipments must be accompanied with a letter defining the reason for return shipment. Non-prepaid return shipments will be refused, unless otherwise agreed in writing.

Complaints against us must be made known in writing or by fax within 10 working days after receipt of the invoice. After this period complaints will not be handled anymore.

Complaints will only then be considered if the client has so far complied with all parts of the agreement, regardless of the agreement of which the obligation is resulting.

Description of the device

Connect the USB Multitrack Module to the GIG-202 Tab mixer. The module provides 24-bit audio data sampling. It is also equipped with 64 channels (32 input channels and 32 output channels).

Features

- Audio loop low delay: simultaneously records up to 32 channels
- Connections: USB 2.0 I/O, type B
- Sampling frequency: 48 kHz/24-bit
- Rated voltage: 5V DC
- Max. input current: 420 mA
- Background noise: <-100 dB
- Distortion: $\leq 0,01\%$ @ 1 kHz

Channel names

- Input 1-20: **CH1-20**
- Input 21-24: **AUX 1-4**
- MAIN-L, MAIN-R, SUB-1, SUB-2: **SUB 1-4**
- SUB3-4: **MAIN**
- AUX1-2: **SOLO**

Channel names are editable. See page 9 for more information.

Overview



Fig. 01

Installation

Remove all packing materials from the USB Multitrack Module. Check if all foam and plastic padding is removed. Connect all cables.

Do not supply power before the whole system is set up and connected properly.

Always disconnect from electric mains power supply before cleaning or servicing.

Damages caused by non-observance are not subject to warranty.

01) Remove the 2 indicated screws from the USB module panel.

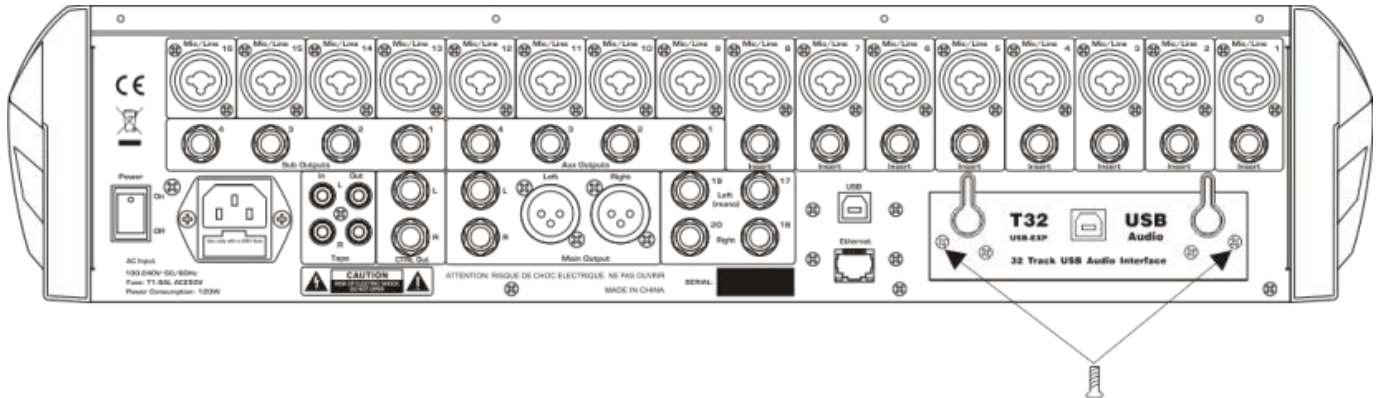


Fig. 02

02) Remove the USB module.

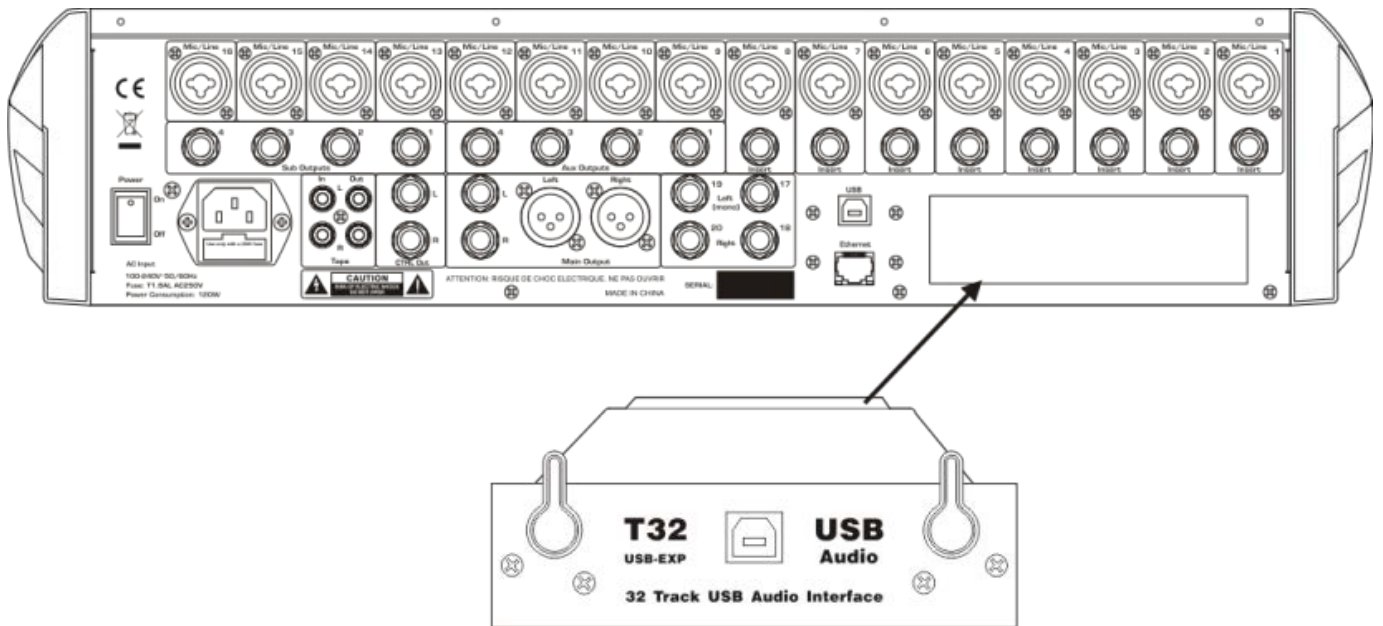


Fig. 03

03) Insert the USB module into the slot.

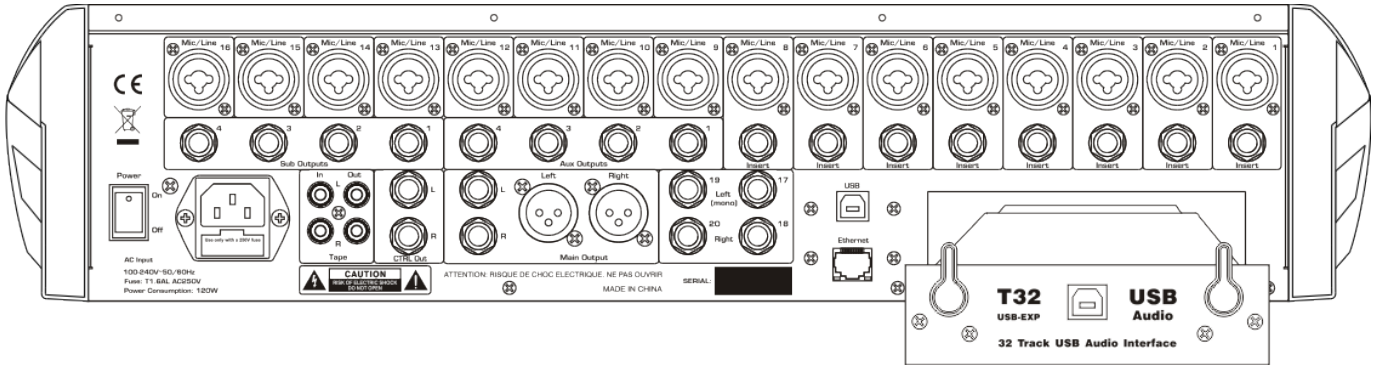


Fig. 04

04) Tighten the 2 screws in order to fit the USB Multitrack Module to the GIG-202 Tab mixer.

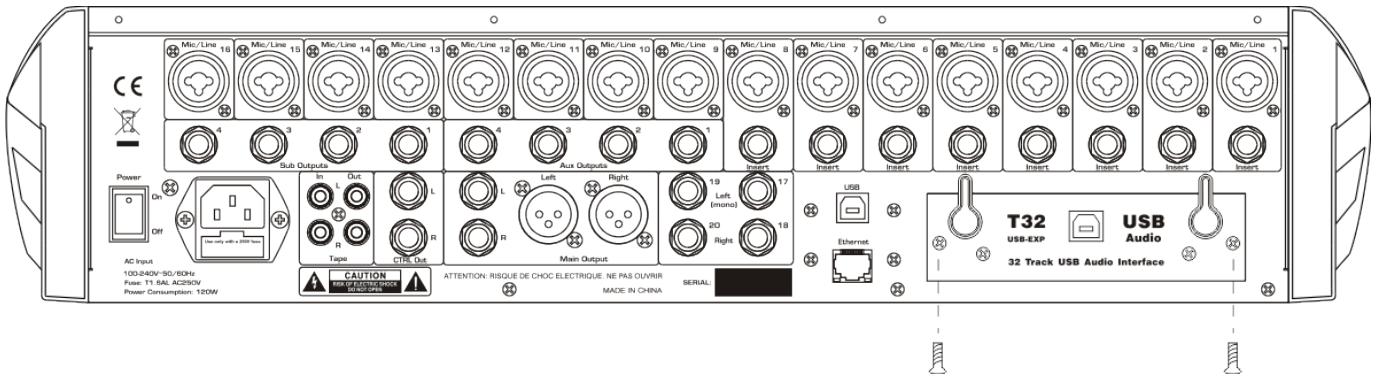


Fig. 05

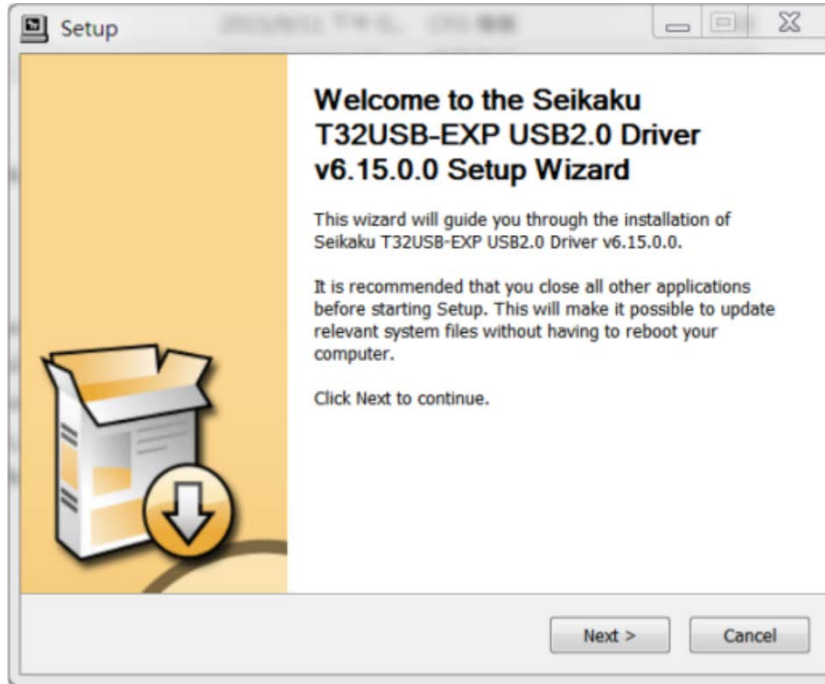
Set Up and Operation

Follow the directions below, as they pertain to your preferred operation mode.

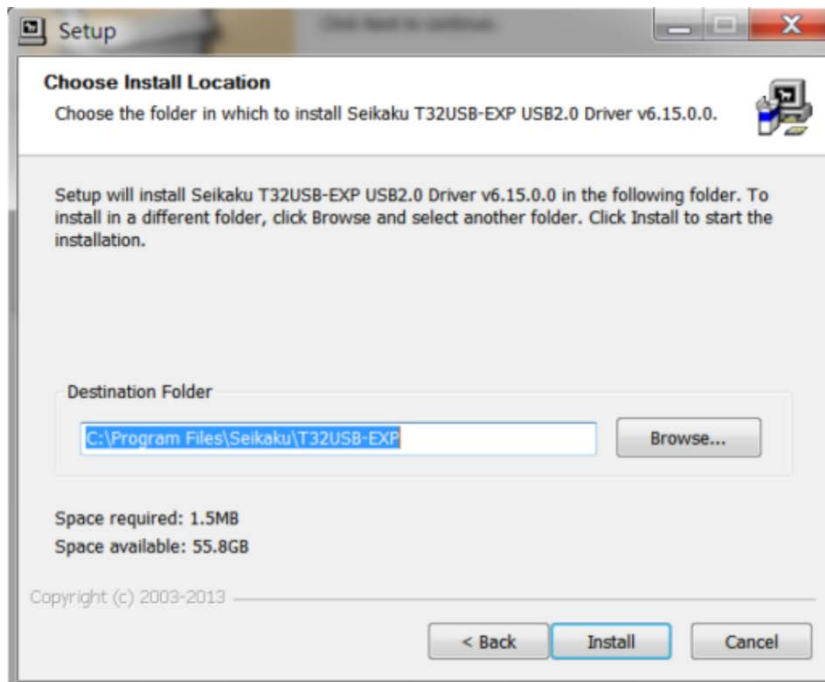
Software Installation

Follow the instructions below if you want to install the software (Windows XP/7/8). If you use Mac OS X operating system, you do not need to install the software.

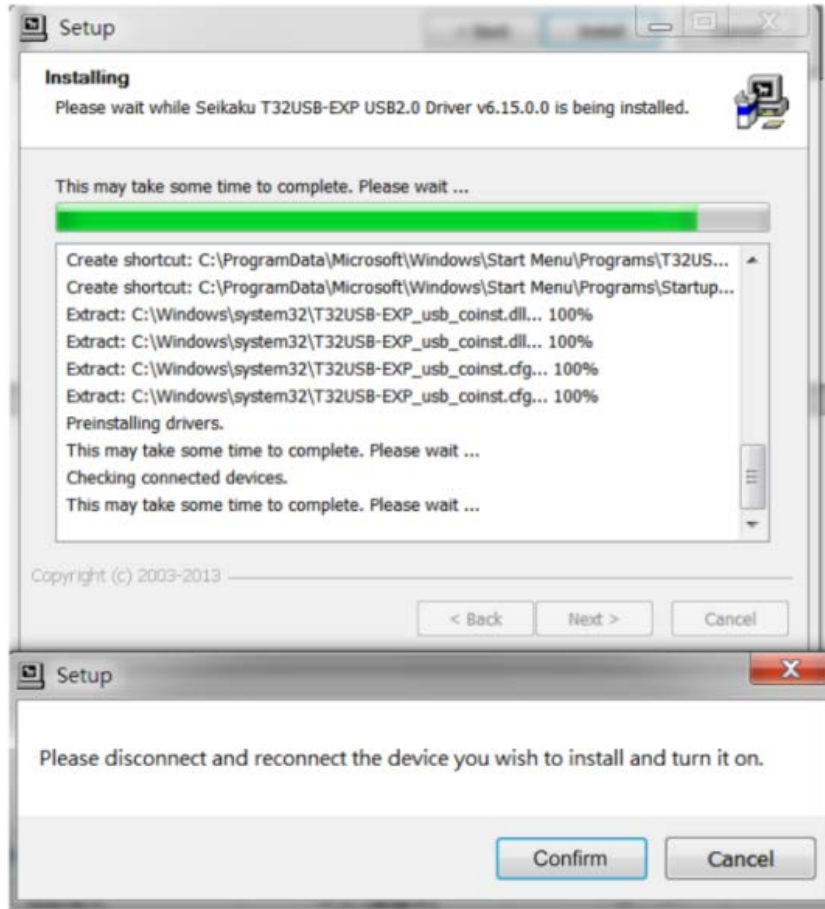
- 01) Extract the "T32USB_EXP_USB_Driver_V1.6.0.rar."
- 02) Activate the USB Multitrack Module and deactivate it on your PC.
- 03) Find the "T32USB_EXP_USB_Driver_V1.6.0" folder on your PC and open it.
- 04) Double click on the setup.exe file to start installation.
- 05) The following screen will pop up:



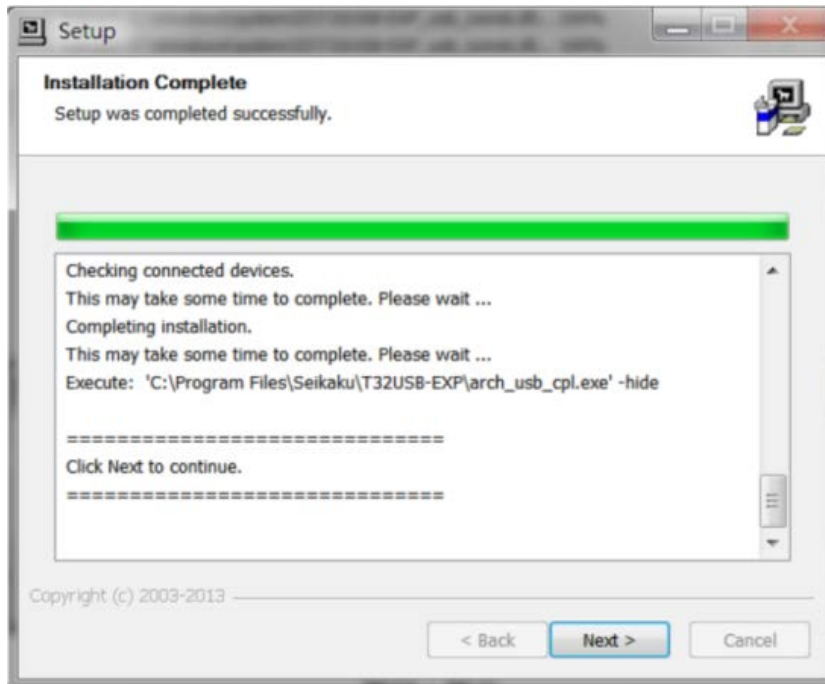
- 06) Click on Press to continue. The following screen will pop up:



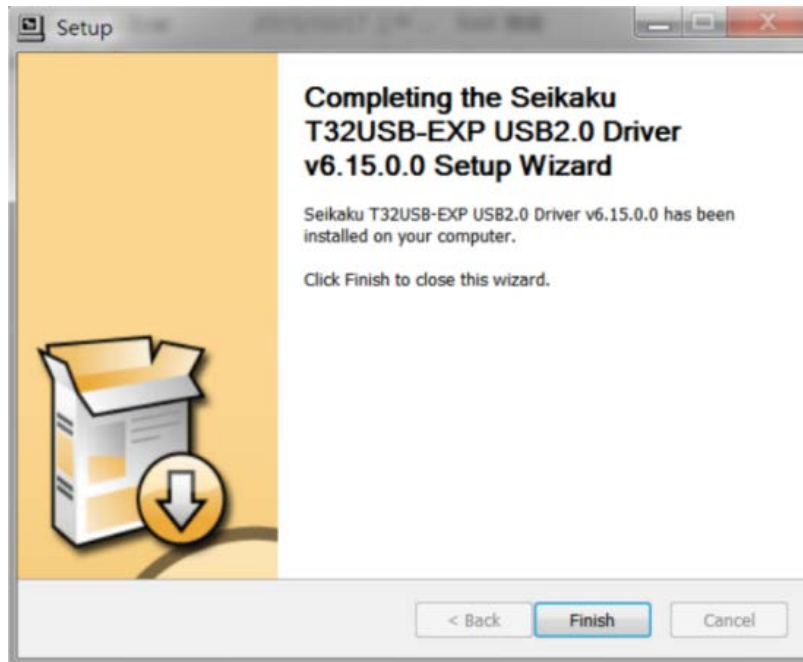
- 07) Use the default settings and click on Install.
- 08) Once the process has been finished, click on Confirm.



- 09) Connect the USB Multitrack Module to your PC.
- 10) When the following screen pops up, click on Next:



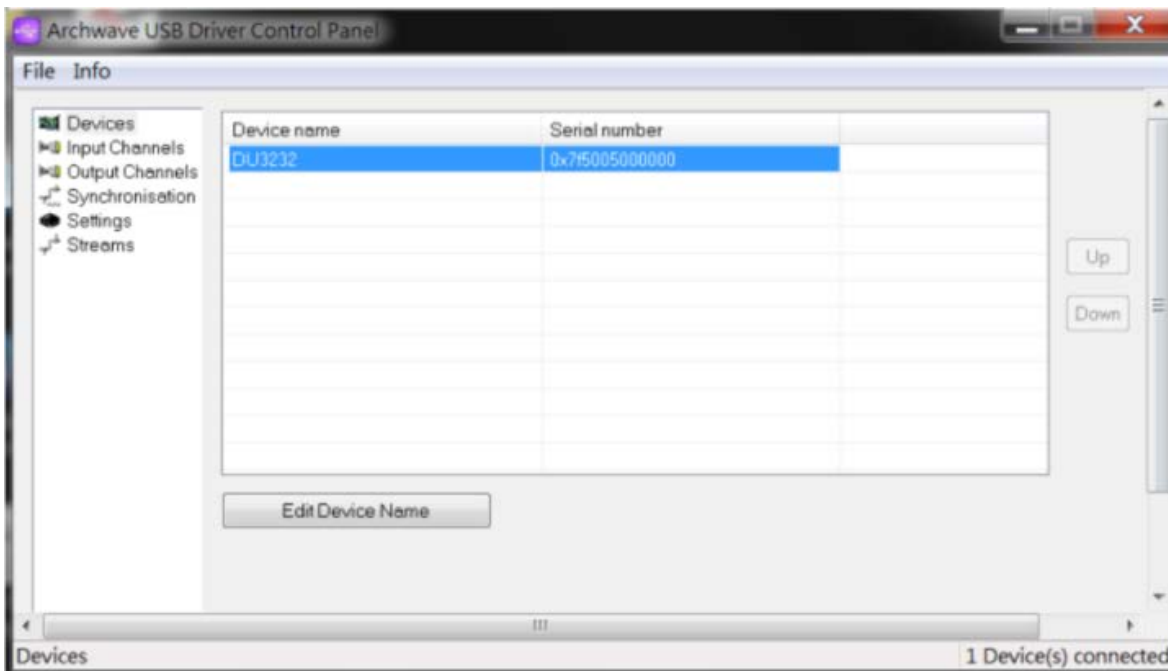
11) Once the process has been finished, click on Finish.



12) Click on the shortcut in the lower right corner of the taskbar.

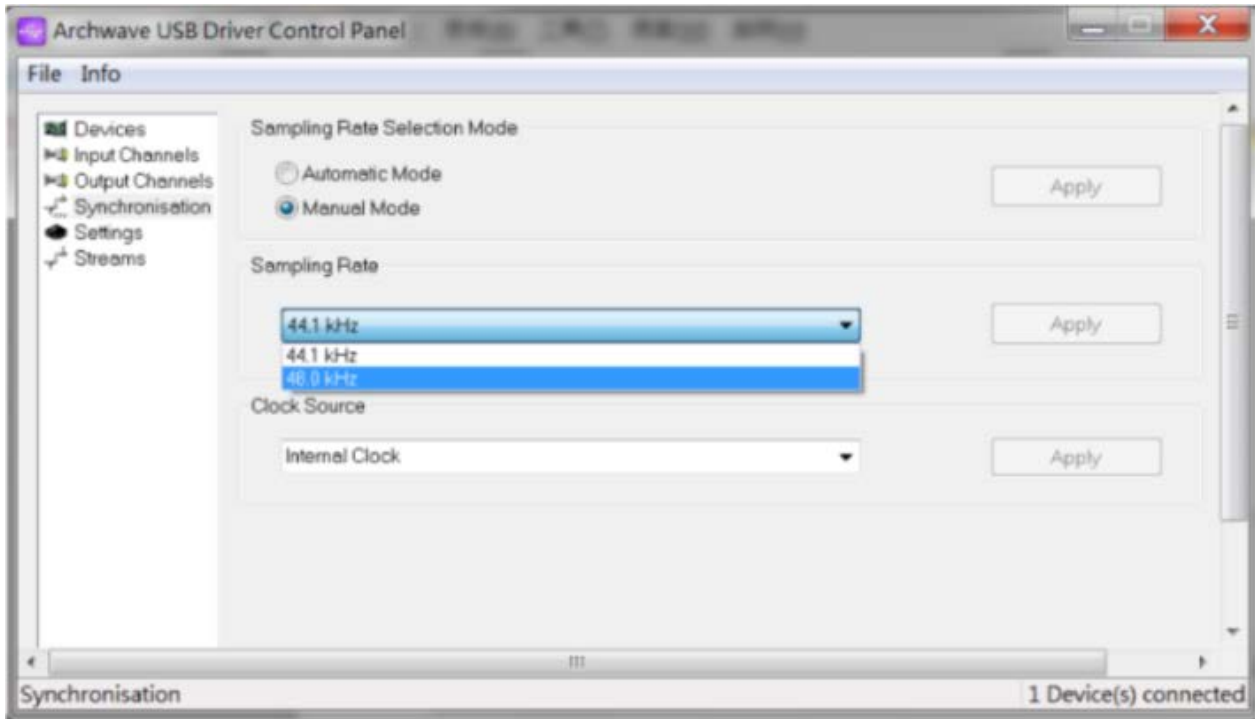


13) The software is now ready for use. Double-click on DU3232 under Device name, in order to rename it. Similarly, rename output and input channel names.



Setting Sample Rate

- 01) Connect the GIG-202 Tab mixer with the installed USB Multitrack Module.
- 02) Click on the icon in the lower right corner of the taskbar (step 12, page 9) to activate the software.
- 03) On the left-hand side, choose Synchronisation.
- 04) Set Sampling Rate Selection Mode to Manual Mode.
- 05) Sampling rate **must be set to 48 kHz**. ⚠️ **The device will not work properly, if set otherwise.** ⚠️
- 06) Click on Apply to save settings.



Product Specification

- Audio loop low delay: simultaneously records up to 32 channels
- Connections: USB 2.0 I/O, type B
- Sampling frequency: 48 kHz/24-bit
- Rated voltage: 5V DC
- Max. input current: 420 mA
- Background noise: <-100 dB
- Distortion: ≤0,01% @ 1 kHz

Design and product specifications are subject to change without prior notice.



Website: www.Dap-audio.info
Email: service@highlite.nl



©2016 DAP Audio