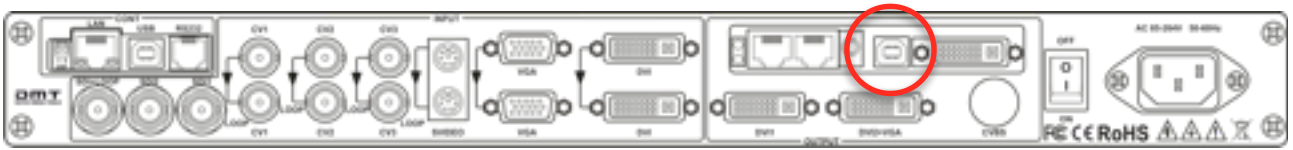


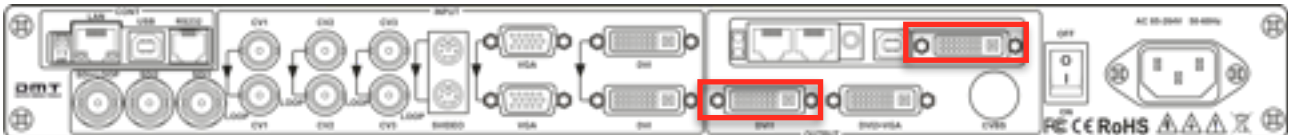


User manual Led Studio 2016

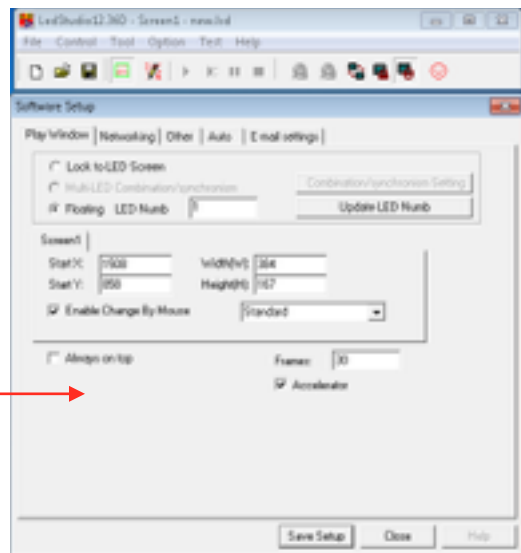
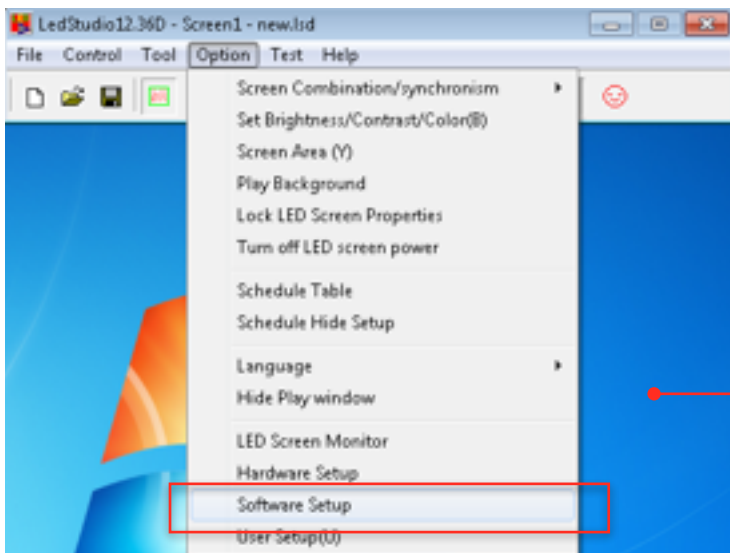
- Install Led Studio Software
- Serial key is : 888888
- Connect the sender card with a USB cable to the computer



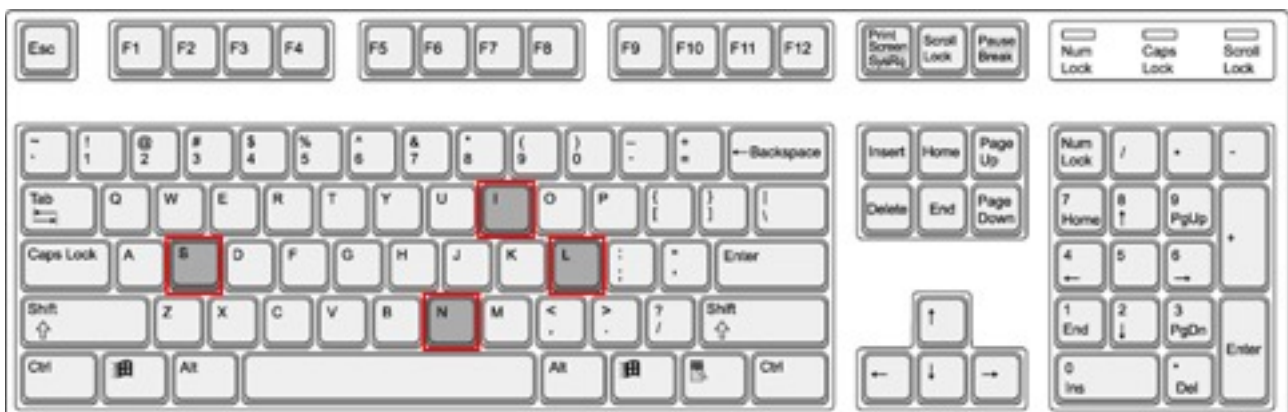
- Link the DVI Output of the video processor with the DVI input of the sender card



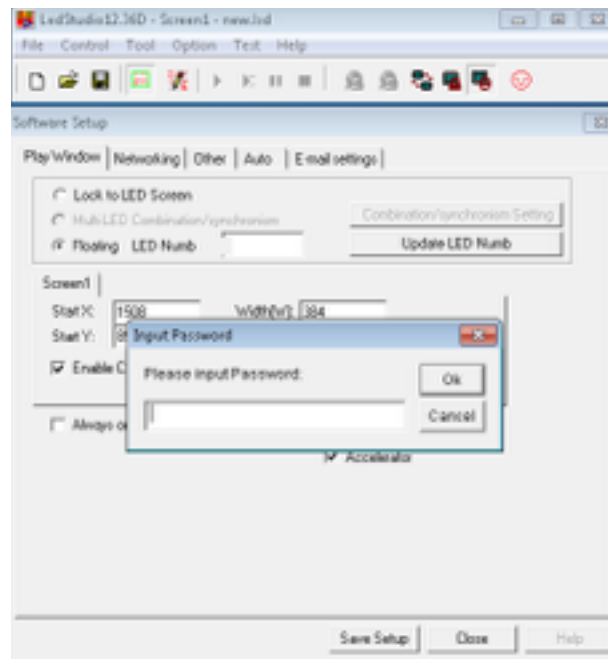
- Start Led Studio Software
- Go to **OPTION** and select **SOFTWARE SETUP**



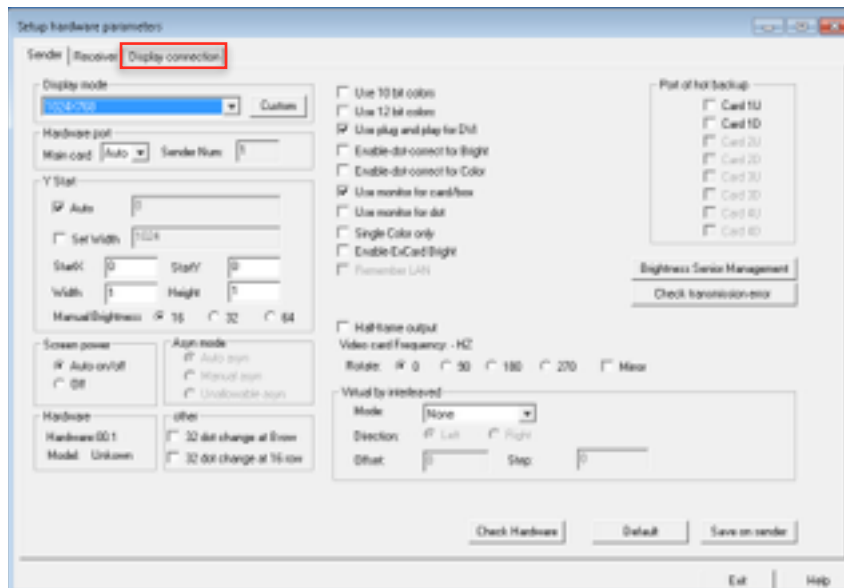
- Type the following on your keyboard ; **linsn**



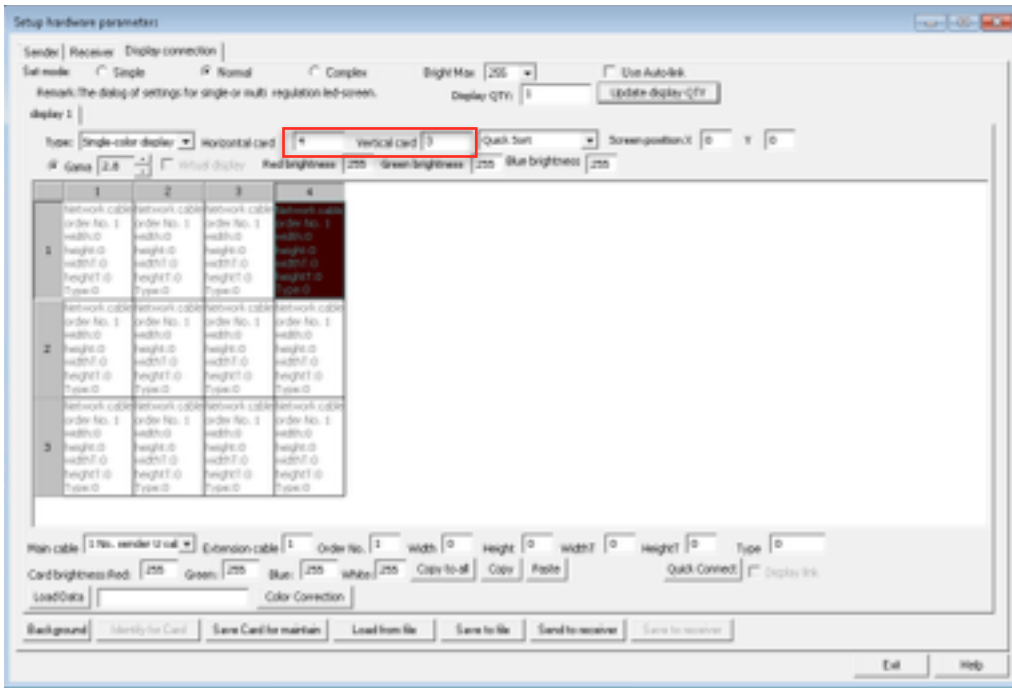
- Password is : **168**



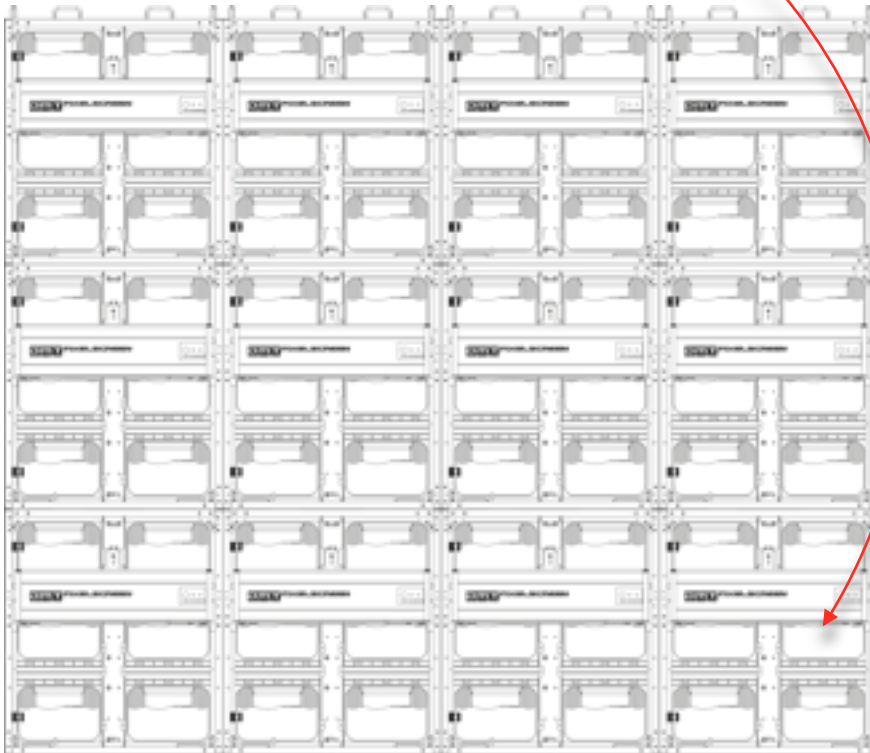
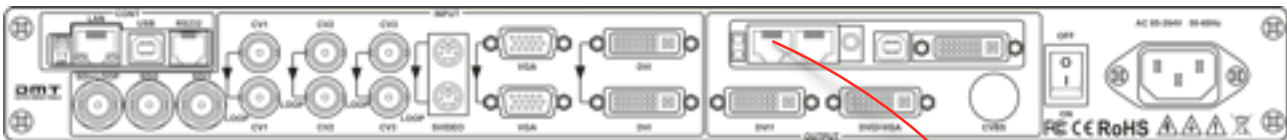
- After clicking ok you enter the „Setup Hardware Parameters” menu. Please click on „Display Connection” .



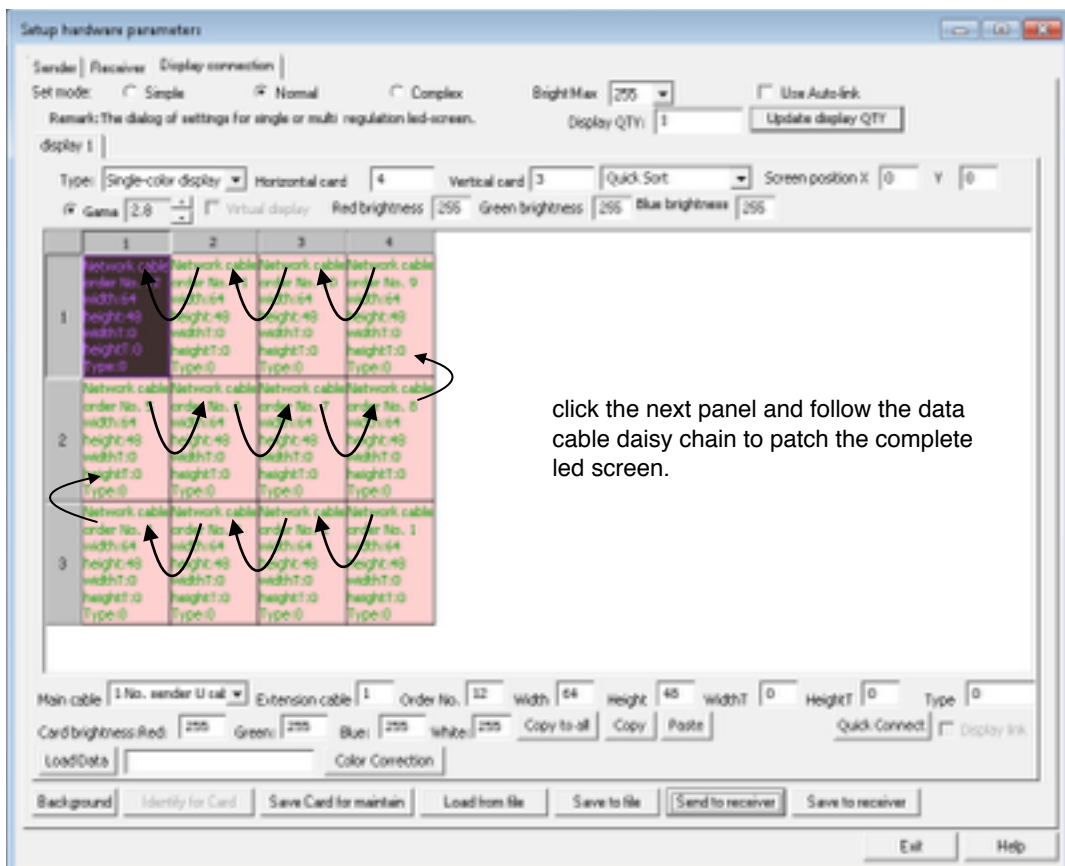
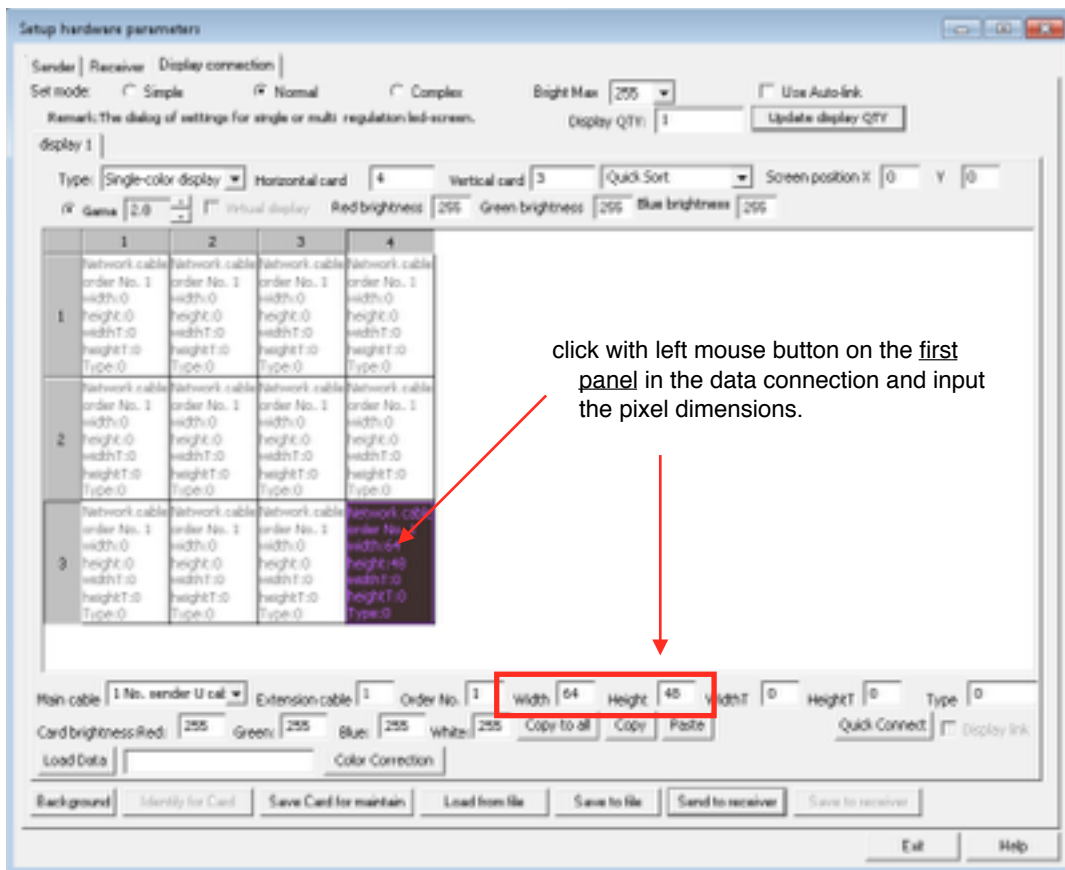
- Input the size of the led screen, how many panels are in the setup. In our example there are 4 panels wide and 3 panel high;

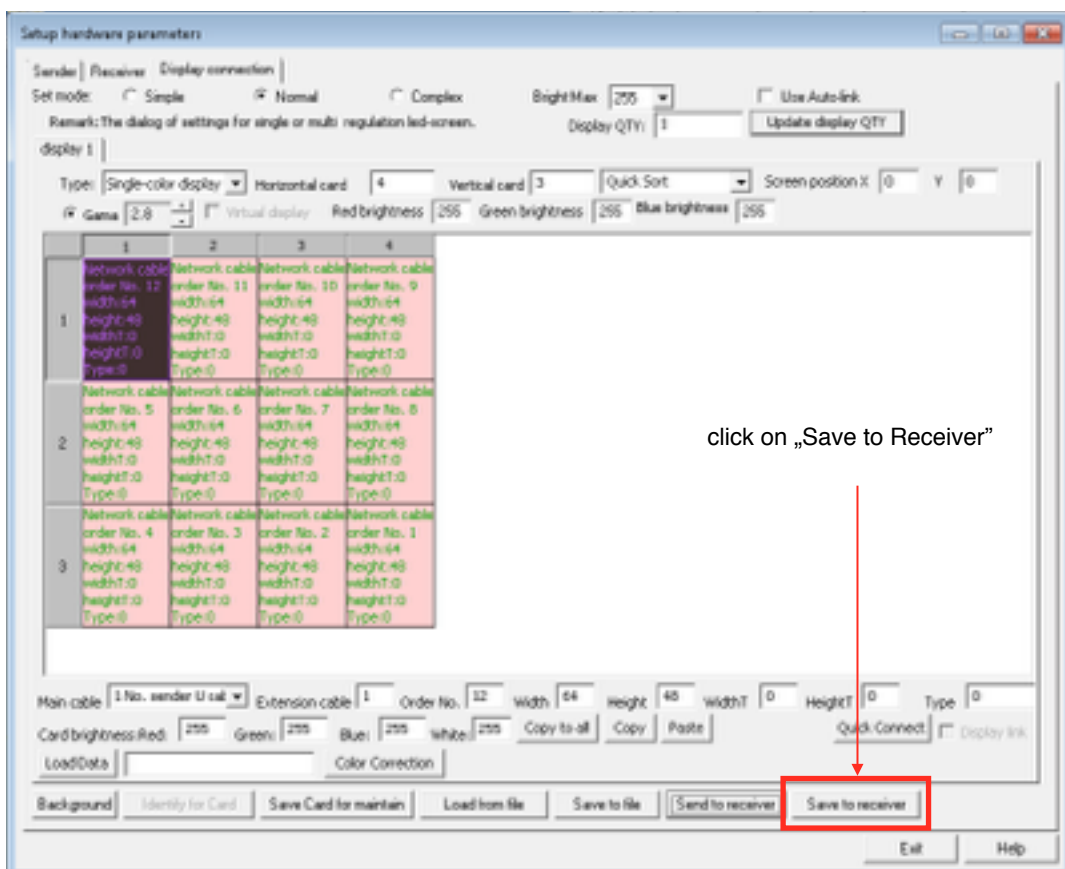
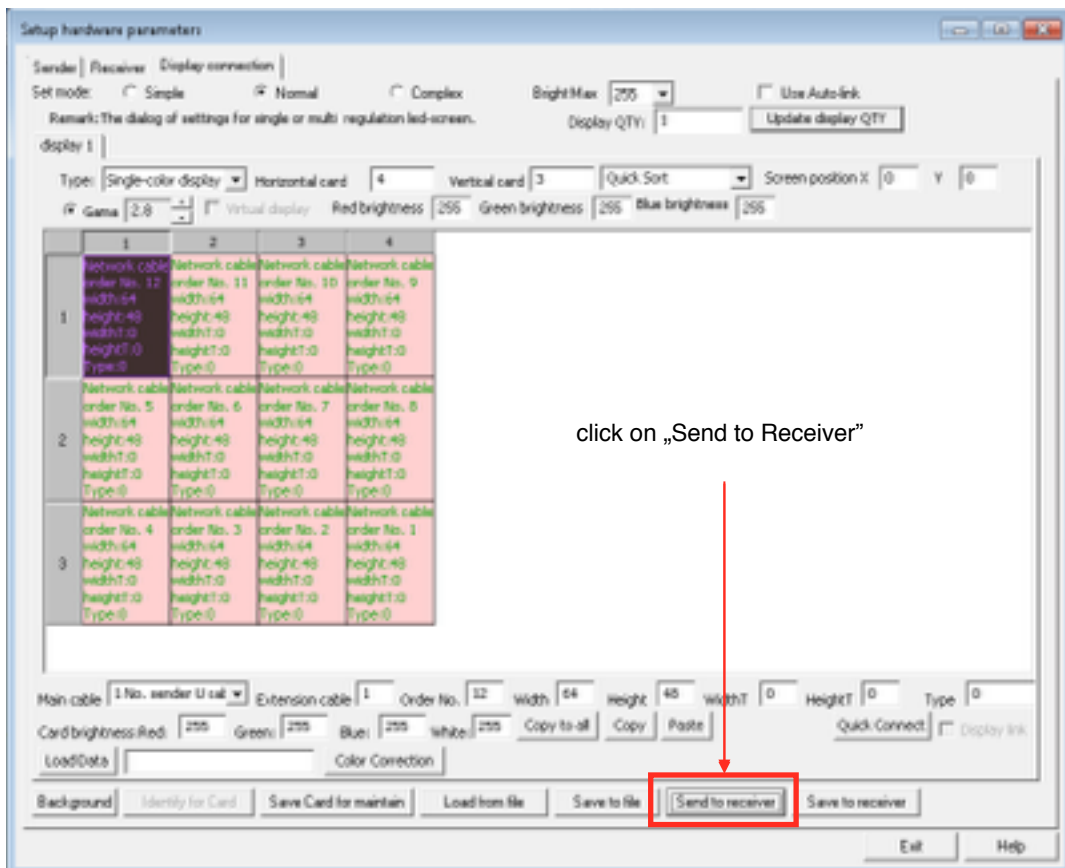


- Click on first panel in the data connection daisy chain;

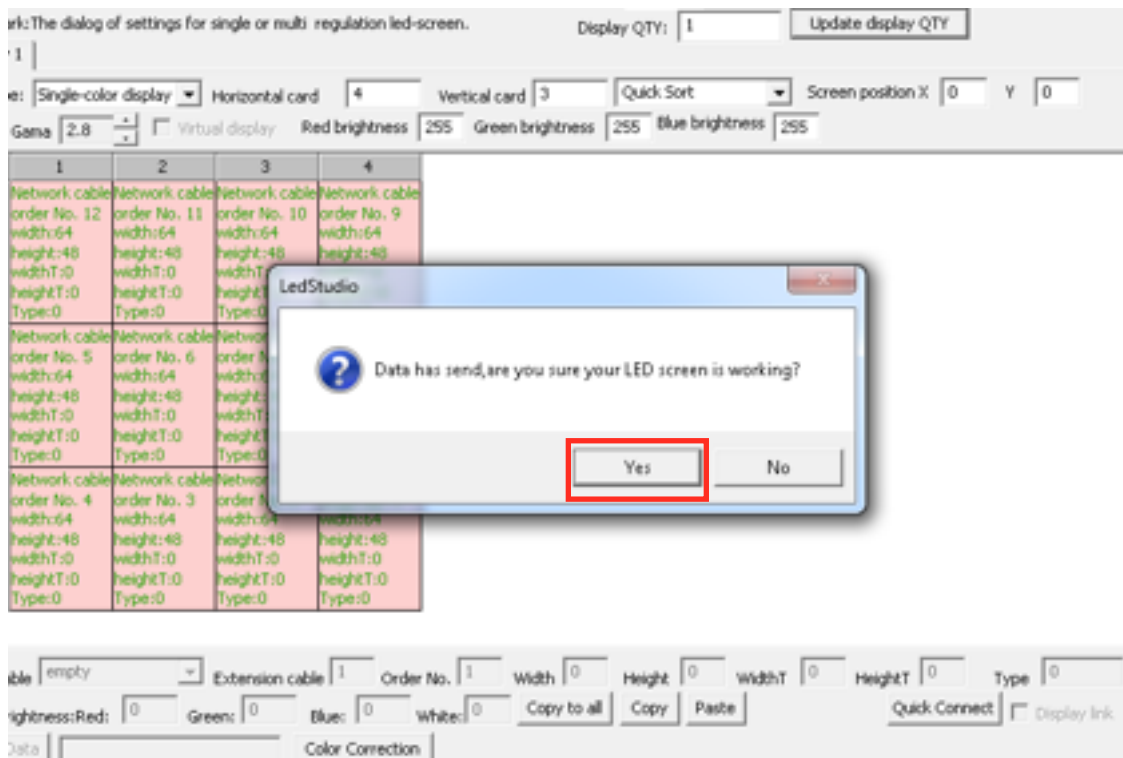


CAT5 cable from Sendercard to the first panel in the setup





- Click the „YES” button



Your led screen is now patched. Be ware that the led screen will only show a part of your input because the pixel resolution of the input is much bigger then the total of pixels (=leds) on your led screen.

Scaling the input resolution

It's possible to scale down the video input resolution to the pixel resolution of your led screen, so your input will be fullscreen on your led screen.

Divide the total pixel resolution of your led screen by the resolution of the input dvi signal.

Example;

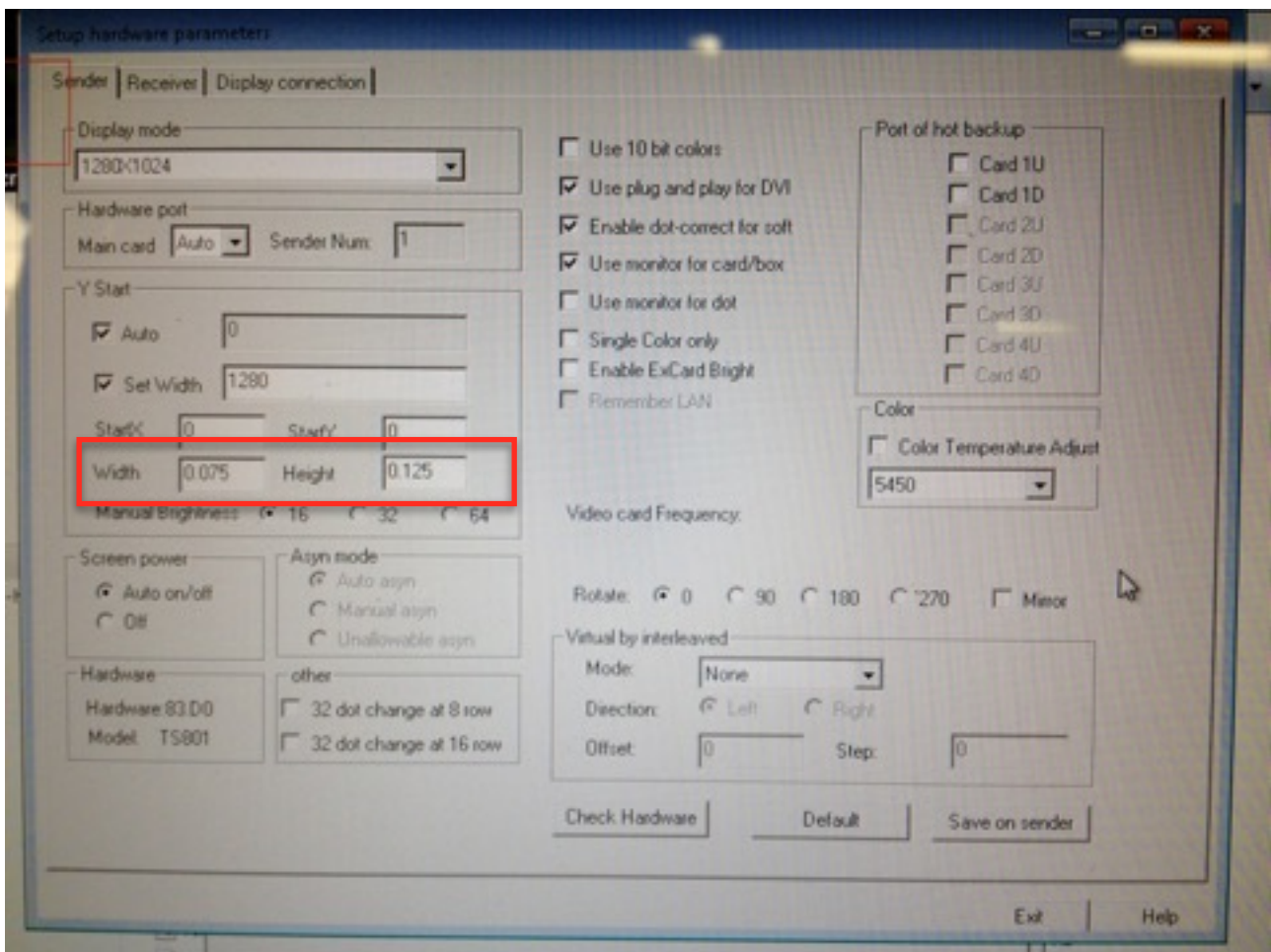
DVI Input resolution is 1280 x 1024 pixels

Led Screen is 96 x 128 pixels

96 : 1280 = 0,075

128 : 1024 = 0,125

Start led studio software and follow page 2. Option → Software Setup → linsn → 168



Use the 0,075 and 0,125 in led studio software, make sure to use comma's and no points, otherwise it won't work.