



MOOSE
www.moosesound.com

PROUDLY DEVELOPED AND
MANUFACTURED IN PORTUGAL

LA12A

2-way line array element
Class D & DSP for active version
Integrated rigging system



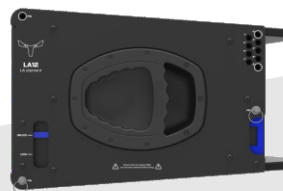
Presentation:

Compact vertical line array elements designed to provide high performance, detailed highs and a well-defined midrange. The series comprises two compact 2-way front loaded (maximum sensitivity) design models, bi-amp. operated, one loaded with a 10" and 3in voice coil transducer + 1.4" (2.56in) compression driver (LA10) and the other with a 12" and 3in interleaved sandwich voice coil + 1.4" (2.56in) high sensitivity compression driver (LA12) both combinations ensuring powerful and crystal clear reproduction, high SPL with an extended frequency response. LA10 and LA12 vertical MF/HF pattern control is array splay dependent and horizontal MF/ HF coverage is 120° thanks a true wave guide horn with phase correction that ensures consistent and long range projection with very low distortion levels. For the active versions, both LA10A and LA12A are equipped with a class D amplifier and a fully programmable DSP (user friendly software) for real time operation according to different environments and music styles. With 5 presets than can be loaded on the rear panel, the class D amplifier is prepared for 85-264Vac universal mains and features various electronic protections to guarantee the use of the speaker system in perfect sound and safe operation. LARRAY rugged enclosure is manufactured using 15mm birch plywood painted in hard-wearing and durable, equipped with fully integrated rigging hardware with quick-release magnetic pins to ensure fast and easy setup, designed both for flying and ground stack applications. The LARRAY series is the perfect in live sound reinforcement solution to be used in small to medium live events, as well as permanent installation

Features:

- Front loaded array elements
- Passive and class D versions
- High perform. and crystal clear reproduction
- True wave guide horn with phase correction
- Faithful dynamic response and great range
- Universal 85-264Vac for the active versions
- Integrated rigging system for stacked and flown configurations
- Rugged and durable 15mm birch plywood

Other pictures:



Side view



Rear view





MOOSE
www.mooseaudio.com

PROUDLY DEVELOPED AND
MANUFACTURED IN PORTUGAL

LA12A

2-way line array element
Class D & DSP for active version
Integrated rigging system

Technical specifications:

Acoustical

Type	2-way passive line array element
Enclosure design	Trapezoidal array enclosure
Power handling capacity	650W
Frequency range	62 - 20kHz
Nominal impedance	8Ohm
Transducer type	12" LF (3in) EU transducers 1.4" HF (2.56in) EU transducers
Dispersion	Horizontal: 100° Vertical: 7°
Crossover frequency	Adjustable by fully programmable DSP
SPL (1W/1kHz)	132dB @ 1m

Electronics

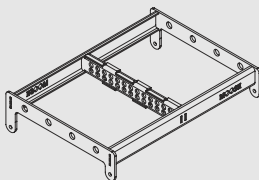
Amplifier type	Class D
Amplifier output	720W + 310W rms
Audio input	XLR/Jack combo connector
Audio output	XLR 3p female
AC Mains	Switching power supply 85-264Vac universal mains
AC Mains connector	Neutrik® powerCON. Power-in (blue) / Power-out (grey)
Protections	Over current, short circuit, thermal, DC and HF protections

Physical

Cabinet	15mm birch plywood, rugged polyurea coating
Grille	Custom perforated metal grilles with acoustic foam
Color	Black or white textured
Hardware	Integrated steel rigging system
Dimensions	660x320x450mm
Weight	37Kg

Dimensions:

LARRAY
Flying Frame



LARRAY
LA12 // LA12A

